

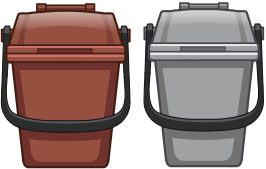


# Waste collection service in Segura

- Separated household waste is collected **door-to-door** or using a community **bin system** in Segura.
- **A set of bins** to sort the waste correctly is available for each home. **The set can be obtained free of charge from the local council.**

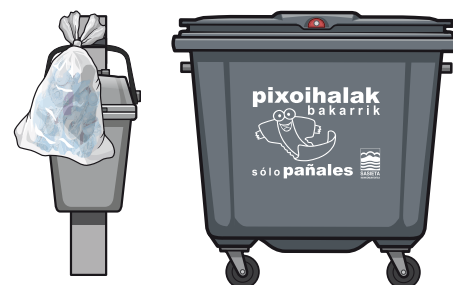
Door-to-door calendar				
SUNDAY	MONDAY	TUESDAY	WEDNESDAY	THURSDAY
				
light packaging	organic	paper and cardboard	light packaging	organic / other

Separate the waste and put it in the correct bin. Make sure the bin is out in the street between 8.00 p.m. and 6.00 p.m. on collection day. Collect the bin the next day and take it home.  
**NOTHING CAN BE IN BAGS, except for nappies.**

- **NAPPIES:** there are two options to dispose of them.

**1- Door-to-door:** they put out in a closed plastic bag and placed next to the bin from **Sunday to Thursday**.

**2- Community bin:** they can be put in the bin **every day** and a card, **available from the local council**, is needed to open it.

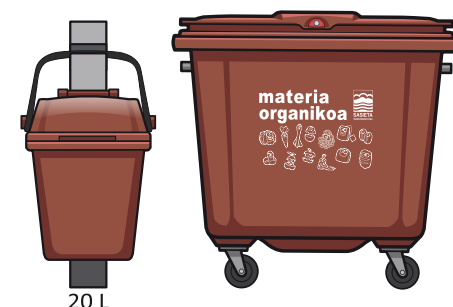


- **ORGANIC:** a 10-litre bin and compostable bags are provided to help sort the waste.

**1- Door-to-door:** the 20-litre brown bin has to be out on the respective collection day.

**2- Community bin:** they can be put in the bin **every day** and a card, **available from the local council**, is needed to open it.

**3- Composting:** further information from Sasieta Mankomunitatea.



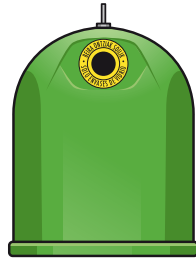
- **How to get more COMPOSTABLE BAGS:**

The vending machine for bags is at the **entrance to the town hall**. The same **card** that opens the container will provide you with one roll of bags every 10 weeks for **FREE**.



# The best waste is no waste!

- Other waste is collected **in containers** in the street:



Glass



Used cooking oil



Clothes



Batteries



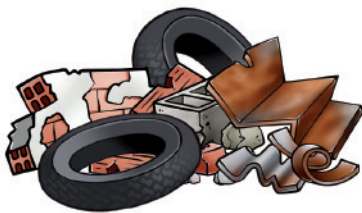
Coffee capsules



- MINIGARBIGUNEA** for small waste: electrical and electronic devices, computer and telecommunications equipment, metals and plastics other than packaging, ink and toner cartridges, X-rays, light bulbs and fluorescent lamps.

*Whatever doesn't fit, take it to the garbage dump. Don't leave any waste on the floor!*

- Household items** (furniture, electrical appliances...) must only be put out on the **2nd and 4th TUESDAYS** of the month at **NIGHT**. Leave them **next to the glass containers**.



- WASTE FROM BUILDING SITES**, rubble, pallets, scrap metal, tyres, etc. must **ALWAYS** be taken to a **"GARBIGUNEA"** waste facility. These are located in the Salbatore district in **Beasain** and on the way up to Oiangu in **Ordizia**. More information at [www.sasieta.eus](http://www.sasieta.eus)

**BEASAIN**

Monday-Friday  
9:00-13:00  
15:00-17:30  
Saturday  
9:00-13:00

**SASIETA ZABORTEGIA GARBIGUNEA**

2 Km RENFE 2 Km

BEASAIN GI-632 ORMAIZTEGI

**ORDIZIA**

Monday-Friday  
9:00-13:00  
15:30-18:00  
Saturday  
9:00-13:00

**GARBIGUNEA**

Oiangu

Su-Eskola Goierri Eskola

Tunela

ORDIZIA BEASAIN

## MORE INFORMATION

[www.sasieta.eus](http://www.sasieta.eus)



If you have any doubts, you can consult the two guides::

- What waste can I put in the yellow container?**
- Recycling is easy!**  
Guide to proper waste separation



**SASIETA MANKOMUNITATEA:** Tel. 943 16 15 55 • [info@sasieta.eus](mailto:info@sasieta.eus)  
**SEGURAKO UDALA:** Tel. 943 80 10 06 • [udala@segura.eus](mailto:udala@segura.eus)



العربية



Română



English



Français



**SASIETA**  
MANKOMUNITATEA

[www.sasieta.eus](http://www.sasieta.eus)